



AERIAL PLATFORMS

SPIDER BOOMS & SELF-DRIVE TRUCK MOUNTS





The Octopus range of spider booms are designed from the ground up.

- **Choice of power options** – low emission petrol, diesel or all electric
- **Powerful tracks** get you across landscaped or rough terrain areas to your worksite
- **Compact design** with narrow tracking mode width, for areas with confined access
- **Articulated jib** for precise, accurate platform positioning
- **Simple**, intuitive operator controls
- **Optional extras** such as non-marking tracks and water-air supply lines to platform



IPAF Operator training and expert technical assistance available

Octopus 14

14m Max Working Height | 6.5m Max Working Outreach

Octopus 17

17m Max Working Height | 7.6m Max Working Outreach

Octopus 21

20.7m Max Working Height | 10.6m Max Working Outreach



Non-Marking Tracks (optional)



Automatic Outrigger Stabilisation (optional)

Spider Booms



info@oilandsteel.co.uk



OCTOPUS 14



The Oil&Steel Octopus 14 spider platform provides a maximum working height of 14m and maximum outreach of 6.5m (one operative operation).

At just 780mm wide in tracking mode it can be moved through a single doorway or narrow gate, making it ideal for operation in very confined space.

Power options

- Low emission petrol or diesel engine
- Bi-energy – petrol or diesel engine with a 110v mains electric motor
- Lithium battery

14m max working height



IPAF - Static Boom (1b)



Technical Specifications

Max Working Height:	14m
Platform Height:	12m
Max Working Outreach:	6.5m
Load Capacity:	200kg (2 person restricted)
Stowed Height:	1980mm
Stowed Length:	4100mm
Stowed Width:	1400mm (with basket)
Basket Dimensions:	L1400 x W700 x H1100mm
Removable Basket	Standard via quick release
Outrigger Footprint:	2700mm x 2700mm
Tracks:	Fixed as standard
Power Source Options:	12hp Petrol, Lithium battery
Wireless Remote Control:	Optional
Total Machine Weight:	1760kg

Optional Accessories

- Wireless radio remote (outriggers & drive functions)
- Tracks – optional extending
- Non marking tracks
- Automatic stabilisation
- 9hp diesel engine (+10kg)
- All electric battery power (+60g)
- Octopus 14 with double working area fixed track (1760kg)
- Octopus 14 with double working area widening track (1810kg)
- Octopus 14 with single working area + fixed track (1910kg)
- Octopus 14 with single working area + widening track (1960kg)
- Water / air line supply to basket (fitted as standard)

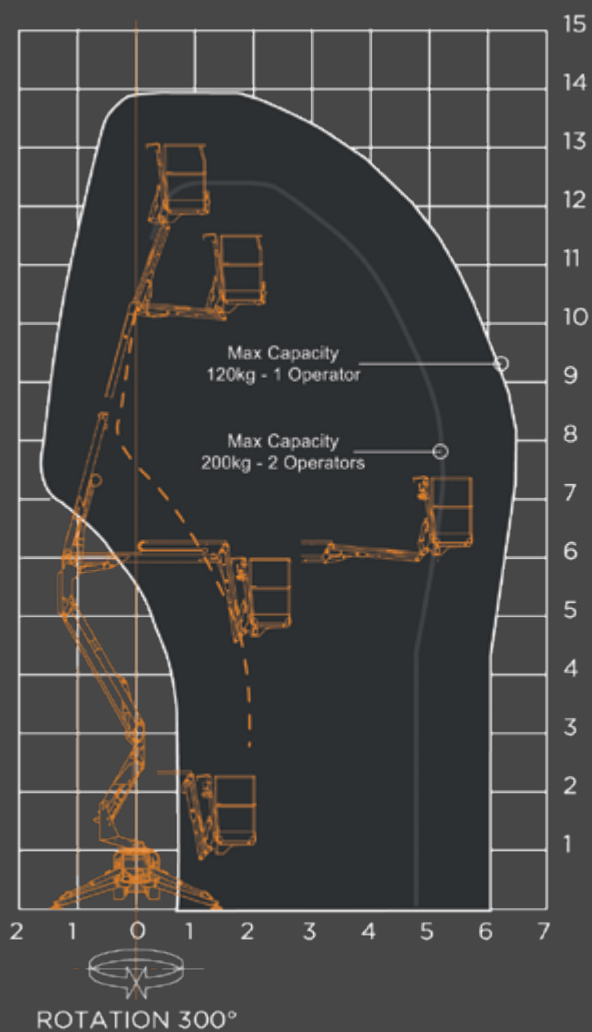
Available with the wireless remote control



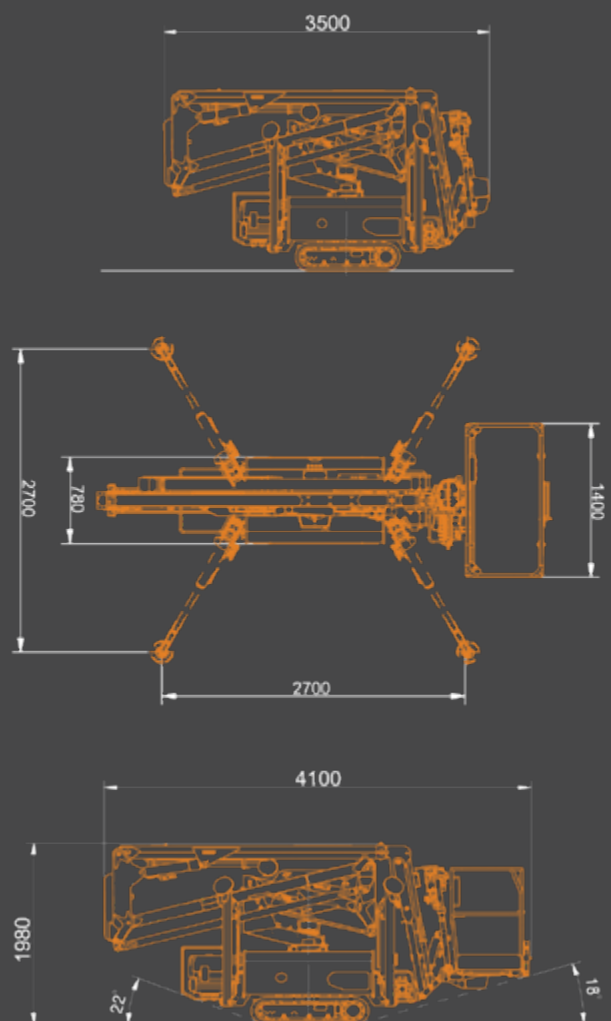


Octopussy has an ultra-compact chassis enabling it to access sites through narrow gates

Working envelope



Dimensions





OCTOPLUS 17

The Oil&Steel Octoplus 17 spider platform delivers enhanced performance with a maximum working height of 17m and an extended maximum outreach of 7.6m.

Proportional controls allow the basket to be positioned quickly and precisely – and smart functions, including load/unload drive and a stabilisation height of up to 625mm, make working at height in all conditions safer and more productive.

Power options

- Low emission petrol or diesel engine
- Bi-energy – petrol or diesel engine with a 73.6v mains electric motor
- Lithium battery



17m max working height



IPAF - Static Boom (1b)



Technical Specifications

Max Working Height:	17m
Platform Height:	15m
Max Working Outreach:	7.6m
Load Capacity:	250kg
Stowed Height:	1980mm
Stowed Length:	4600mm
Stowed Width:	785mm (without basket)
Basket Dimensions:	L1400 x W700 x H1100mm
Removable Basket	Standard quick release
Outrigger Footprint:	2870mm x 2830mm
Tracks:	Fixed
Power Source Options:	Petrol or diesel (with 110v mains motor) Lithium battery
Wireless Remote Control:	Optional
Total Machine Weight:	2330kg

Optional Accessories

- Non marking tracks
- Dual water / air line supply to basket

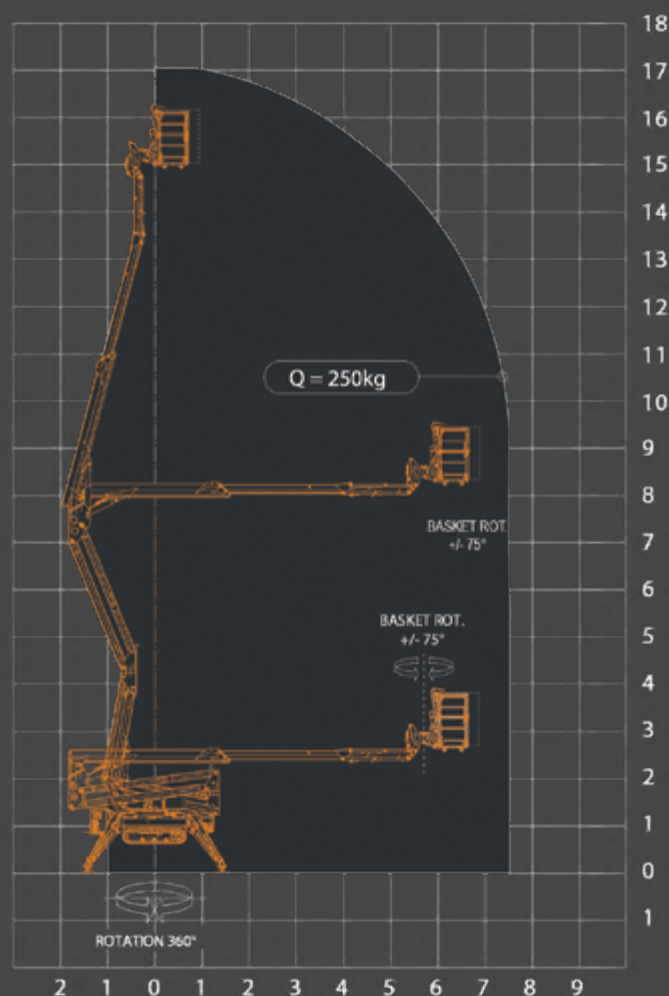


Available with non marking tracks

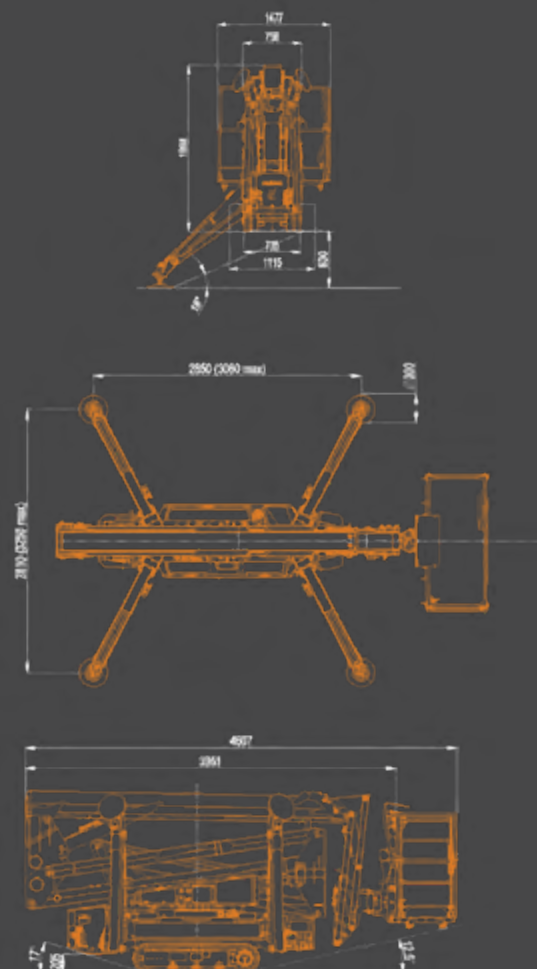


It looks great and it performs brilliantly – the OctoPlus 17 has an unrivalled load capacity of 250kg and outreach of 7.6m

Working envelope



Dimensions





OCTOPLUS 21

The Oil&Steel Octoplus 21 is a next generation spider platform with a maximum working height of 20.7m and maximum outreach of 10.6m.

Just 785mm wide in tracking mode, it is ideal for working in confined spaces. The Octoplus 21 operates with ease across low load bearing ground and sensitive floors and is packed with features to support safety and productivity.

Power options

- Low emission petrol or diesel engine
- Bi-energy – petrol or diesel engine plus 73.6v mains electric motor
- Lithium battery



20.7m max working height



IPAF - Static Boom (1b)



Technical Specifications

Max Working Height:	20.7m
Platform Height:	18.7m
Max Working Outreach:	10.6m
Load Capacity:	250kg
Stowed Height:	1990mm
Stowed Length:	5900mm
Stowed Width:	785mm (with basket)
Basket Dimensions:	L1400 x W700 x H1100mm
Removable Basket	Standard quick release
Outrigger Footprint:	2900mm x 2900mm (variable)
Tracks:	Hydraulically extendable
Power Source Options:	Petrol, Diesel, Bi-energy, Lithium battery
Wireless Remote Control:	Optional
Total Machine Weight:	2850kg

Optional Accessories

- Wireless radio remote (outriggers & drive functions)
- Non marking tracks
- Dual water / air line supply to basket
- Variable outriggers



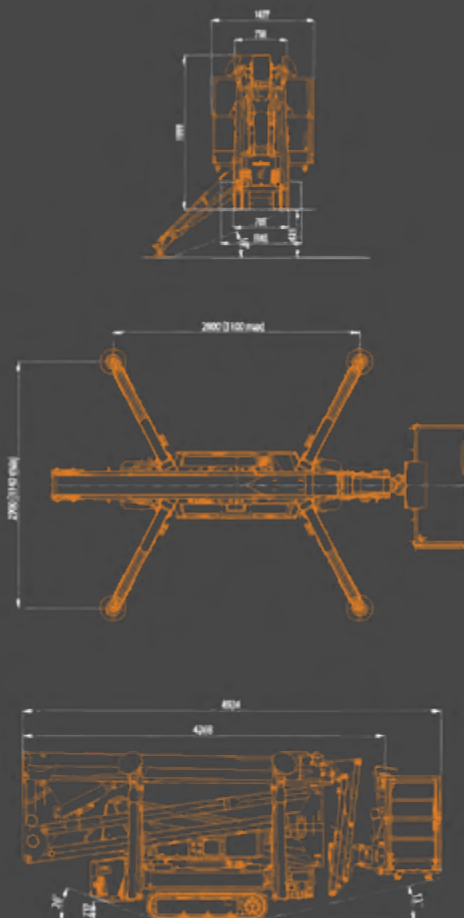
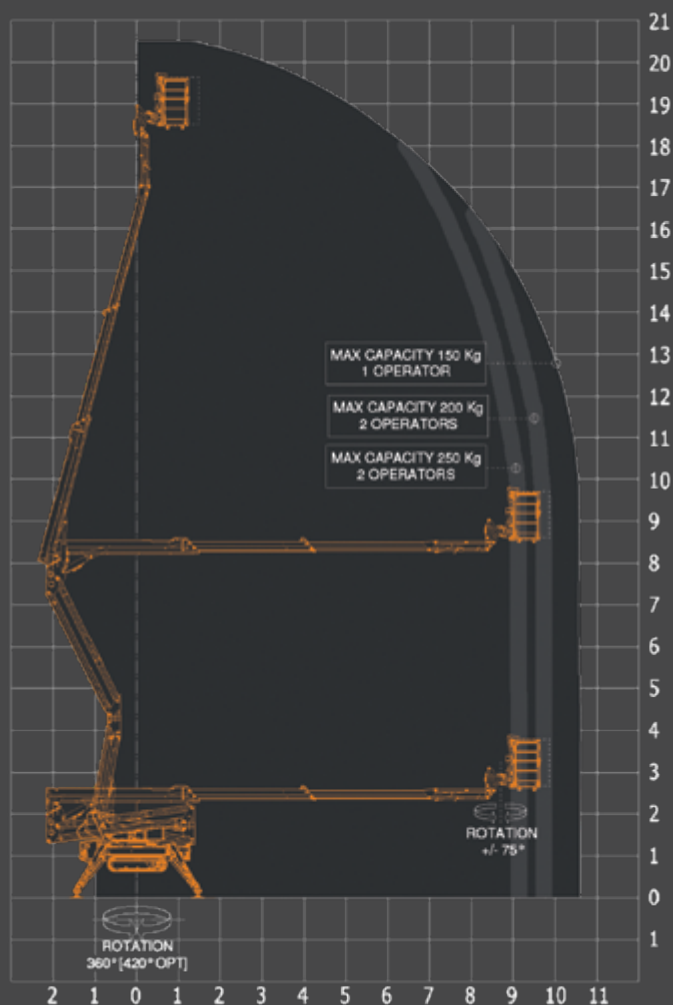
Available with water / air line supply to basket



Exceptional ground clearance and a maximum working height of 21m – the Octoplus 21 delivers industry-leading performance

Working envelope

Dimensions





Self-Drive Truck Mounts

- Snake articulated booms or Scorpion straight booms with working heights up to 22.6m
- Available on IVECO or Ford Ranger chassis (Snake 147 only)
- Spacious aluminium platform with capacity for up to 2 people
- Simple, proportional controls are easy-to-use
- Vehicle and platform options such as fibre glass platform option for power cable work and electro-hydraulic outriggers

Ideal choice for building and premises maintenance and light installation tasks that can be rapidly deployed

Vehicles can be driven by anyone with a full car licence

Scorpion 1490 Max Working Height 14.2m

Scorpion 1812 Max Working Height 17.8m

Scorpion 2013 Max Working Height 19.9m

Snake 2010H Max Working Height 20m

Scorpion 2313 Max Working Height 22.6m



Personalised Vehicle Livery Wrap (optional)



Chapter 8 Preparation (optional)

Truck Mounted



info@oilandsteel.co.uk



SCORPION 1490

The Scorpion 1490 truck mounted platform on an IVECO chassis has a telescopic boom providing a maximum working height of 14.2m and a maximum outreach of 9.2m.

Based on a truck with a 3.5t chassis, it can be driven and operated with a standard car licence, making it a popular choice for rental companies. The truck-mount platform has intuitive, proportional controls, making it easy to use.



14.2m max working height



IPAF - Static Boom (1b)



Technical Specifications

Max Working Height:	14.2m
Platform Height:	12.2m
Max Working Outreach:	9.2m
Load Capacity:	225kg
Stowed Height:	2900mm
Stowed Length:	7500mm
Stowed Width:	2100mm
Basket Dimensions:	L1400 x W700 x H1100mm
Outrigger Footprint:	(Hydraulic) 2605mm x 3880mm
Engine:	2287cc Euro 6 D-temp
Total Machine Weight:	3270kg

Optional Accessories

- Working lights chassis or basket
- Amber flashing led kit
- Chapter 8 high visibility markings
- Under-run side protection
- Personalised vehicle livery wrap
- Reversing camera
- Water / air line supply to basket
- Insulated fibre glass basket
- Cab air-con

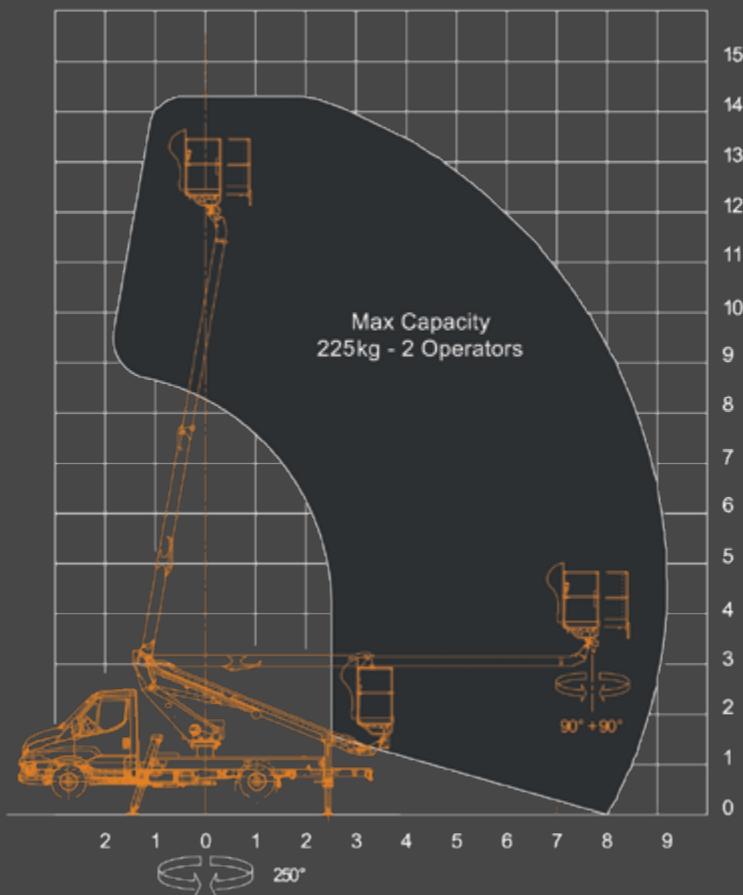


Available with cab air-con

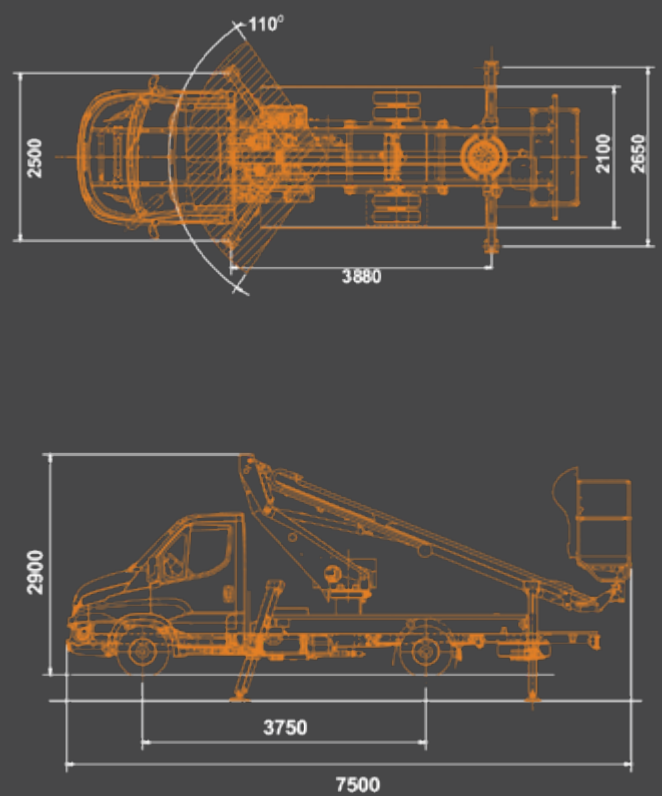


Scorpion 1490 has a telescopic boom that's operated by simple, intuitive proportional controls

Working envelope



Dimensions





SCORPION 1812

The Scorpion 1812 truck mounted platform on an IVECO chassis has a maximum working height of 17.8m and a maximum outreach of 11.4m.

With a highly compact design and fast set up and stow functions, the Scorpion 1812 is ideal for working at height at multiple locations, for example for signage and lighting maintenance.

Smart digital controls enhance safety and productivity, while the basket's 225kg capacity means an operative can work with plenty of tools and materials.



17.8m max working height



IPAF - Static Boom (1b)



Technical Specifications

Max Working Height:	19.8m
Platform Height:	17.8m
Max Working Outreach:	11.4m
Load Capacity:	225kg
Stowed Height:	2900mm
Stowed Length:	7018mm
Stowed Width:	2100mm
Basket Dimensions:	L1400 x W700 x H1100mm
Outrigger Footprint:	(Electro Hydraulic) 2660mm x 3850mm
Engine:	2287cc Euro 6 D-temp
Total Machine Weight:	3300kg

Optional Accessories

- Working lights chassis or basket
- Amber flashing led kit
- Chapter 8 high visibility markings
- Under-run side protection
- Personalised vehicle livery wrap
- Reversing camera
- Water / air line supply to basket
- Insulated fibre glass basket
- Electro hydraulic outriggers
- Cab air-con

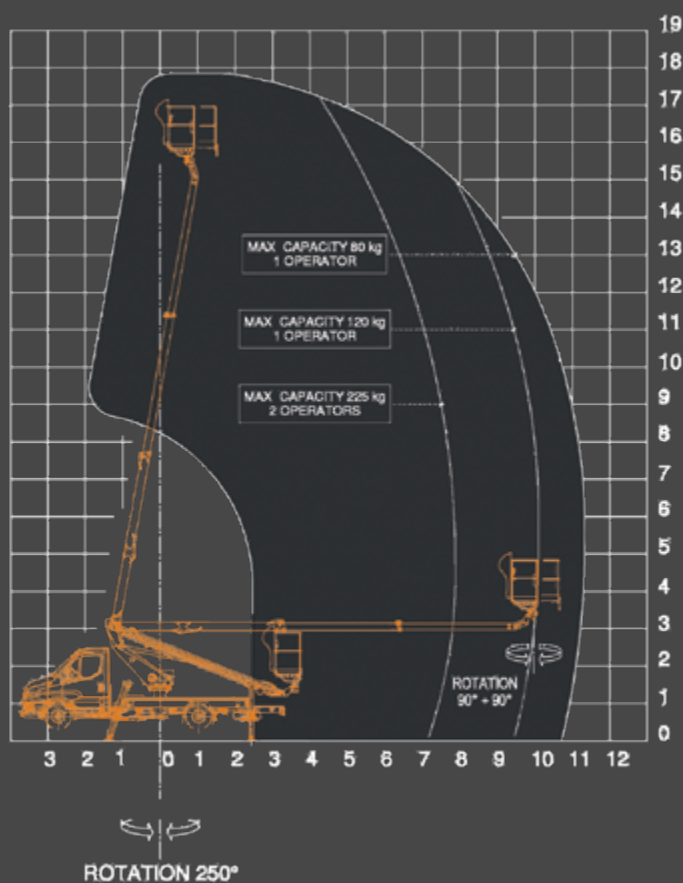


Available with under-run side protection

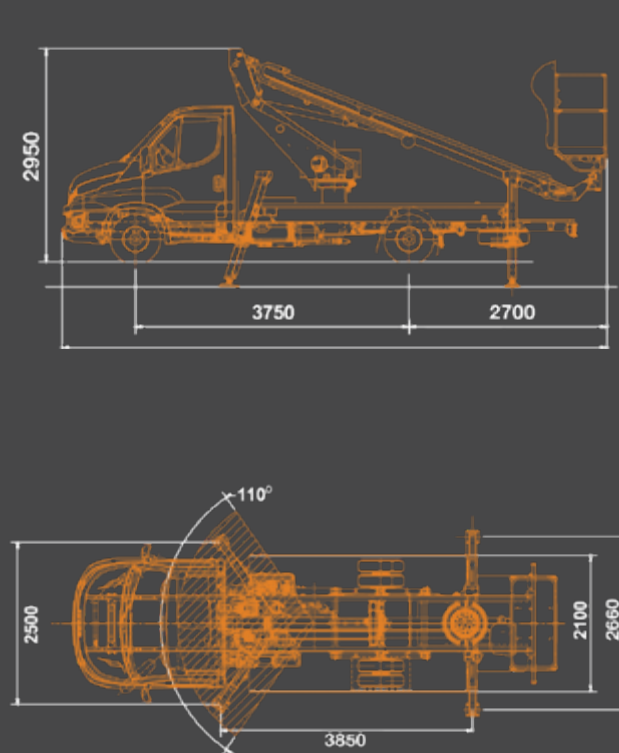


Like the other models, the Scorpion 1812 can be driven on a standard, full car driving licence

Working envelope



Dimensions





SCORPION 2013

The Scorpion 2013 truck mounted platform on an IVECO chassis has a telescopic boom providing a maximum working height of 19.9m and a maximum outreach of 12.5m.

Maximum basket capacity is an impressive 250kg at a restricted maximum working height of 19.5m. The Scorpion truck-mount system is designed to provide particularly fast set up and stow functions, boosting working at height productivity.



19.9m max working height



IPAF - Static Boom (1b)



Technical Specifications

Max Working Height:	19.9m
Platform Height:	17.9m
Max Working Outreach:	12.3m
Load Capacity:	250kg
Stowed Height:	2900mm
Stowed Length:	7018mm
Stowed Width:	2200mm
Basket Dimensions:	L1400 x W700 x H1100mm
Outrigger Footprint:	(Electro Hydraulic) 3165mm x 3820mm
Engine:	2287cc Euro 6 D-temp
Total Machine Weight:	3350kg

Optional Accessories

- Working lights chassis or basket
- Amber flashing led kit
- Chapter 8 high visibility markings
- Under-run side protection
- Personalised vehicle livery wrap
- Reversing camera
- Water / air line supply to basket
- Insulated fibre glass basket
- Electro hydraulic outriggers
- Cab air-con

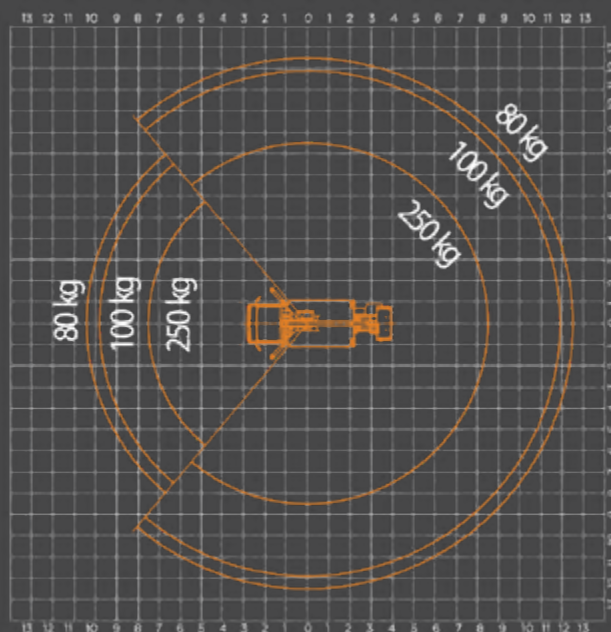
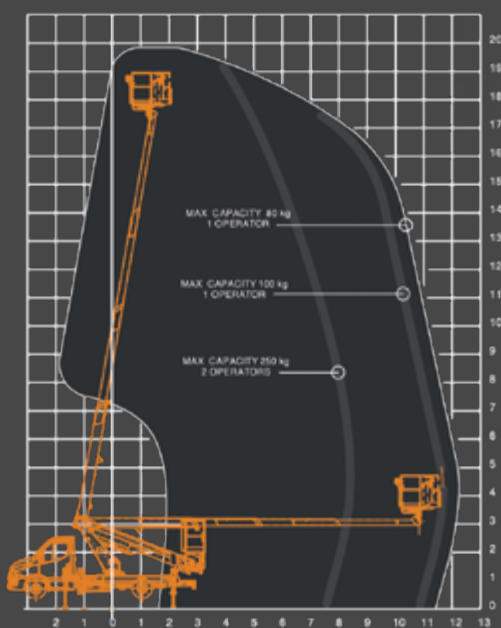


Available with under-run side protection

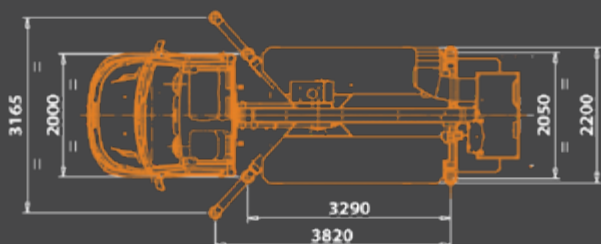
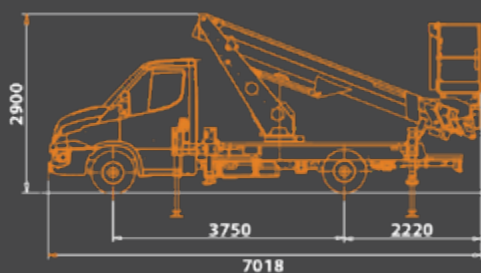


Like the other models, the Scorpion 2013 can be driven on a standard, full car driving licence

Working envelope



Dimensions





SNAKE 2010H

The Oil&Steel Snake 2010H Plus truck-mounted platform on an IVECO chassis provides a highly stable platform for working up to a maximum height of 20m, with a maximum working outreach of 10.2m.

Its large basket has a capacity of 250kg, allowing two people to work at height, or one person with plenty of tools and materials. The Snake 2010H truck mounted platform is ideal for a tasks that include building maintenance, telecommunications installation and maintenance, tree management and lighting maintenance.



20m max working height



IPAF - Static Boom (1b)



Technical Specifications

Max Working Height:	20m
Platform Height:	18m
Max Working Outreach:	10.2m
Load Capacity:	250kg
Stowed Height:	2650mm
Stowed Length:	6963mm
Stowed Width:	2110mm
Basket Dimensions:	L1400 x W700 x H1100mm
Outrigger Footprint:	(Manual Extensions*) 3140mm x 3390mm
Engine:	2287cc Euro 6 D-temp
Total Machine Weight:	3300kg

Optional Accessories

- Working lights chassis or basket
- Amber flashing led kit
- Chapter 8 high visibility markings
- Under-run side protection
- Personalised vehicle livery wrap
- Reversing camera
- Insulated fibre glass basket
- Water / air line supply to basket
- Cab air-con

*NOTE outrigger vertical deployment is hydraulic as standard

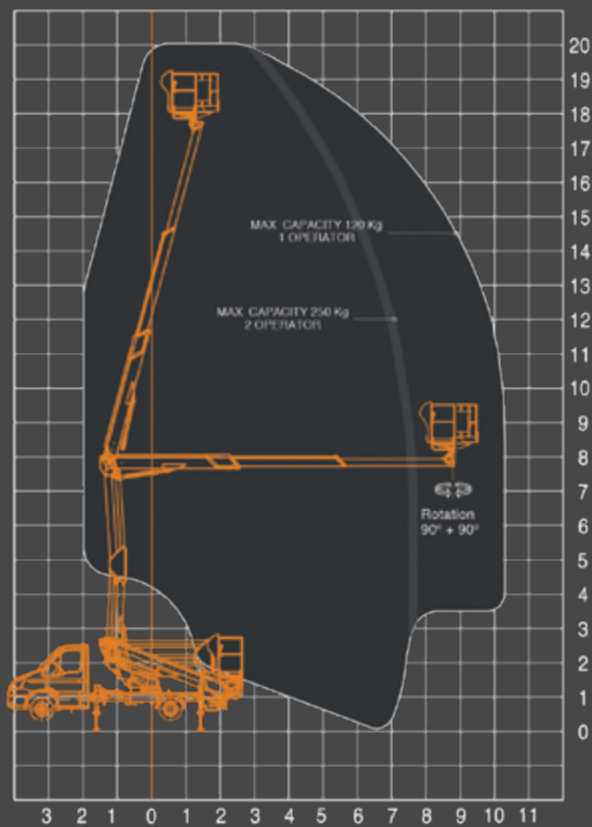


Available with reversing camera

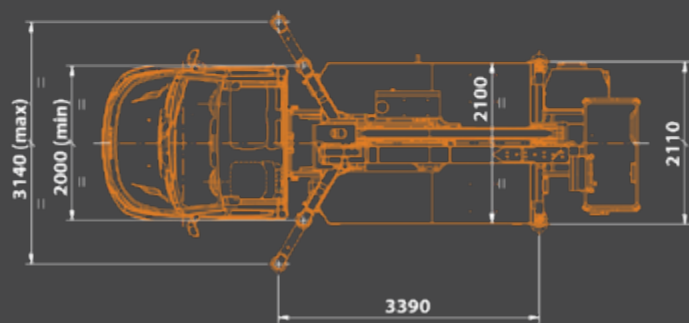
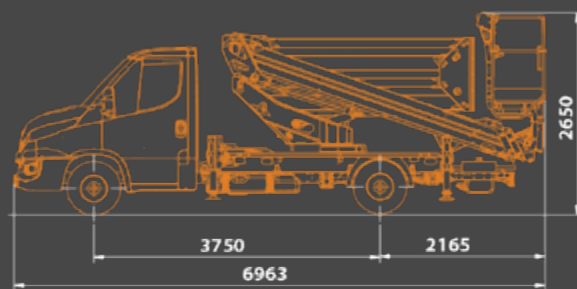


Snake 2010H Plus has an articulated boom providing flexible envelope of working heights up to 20m

Working envelope



Dimensions





SCORPION 2313

The Scorpion 2313 truck mounted platform on an IVECO chassis has a telescopic boom providing a maximum working height of 22.6m and a maximum outreach of 12.2m.

It provides a load capacity of 250kg at a working height of just under 22m, allowing an operator to carry an impressive amount of tools and materials.



22.6m max working height



IPAF - Static Boom (1b)



Technical Specifications

Max Working Height:	22.6m
Platform Height:	20.6m
Max Working Outreach:	12.2m
Load Capacity:	250kg
Stowed Height:	2900mm
Stowed Length:	7650mm
Stowed Width:	2200mm
Basket Dimensions:	L1400 x W700 x H1100mm
Outrigger Footprint:	3165mm x 3815mm
Engine:	2287cc Euro 6 D-temp
Total Machine Weight:	3350kg

Optional Accessories

- Working lights chassis or basket
- Amber flashing led kit
- Chapter 8 high visibility markings
- Under-run side protection
- Personalised vehicle livery wrap
- Reversing camera
- Insulated fibre glass basket
- Electro hydraulic outriggers
- Water / air line supply to basket
- Cab air-con

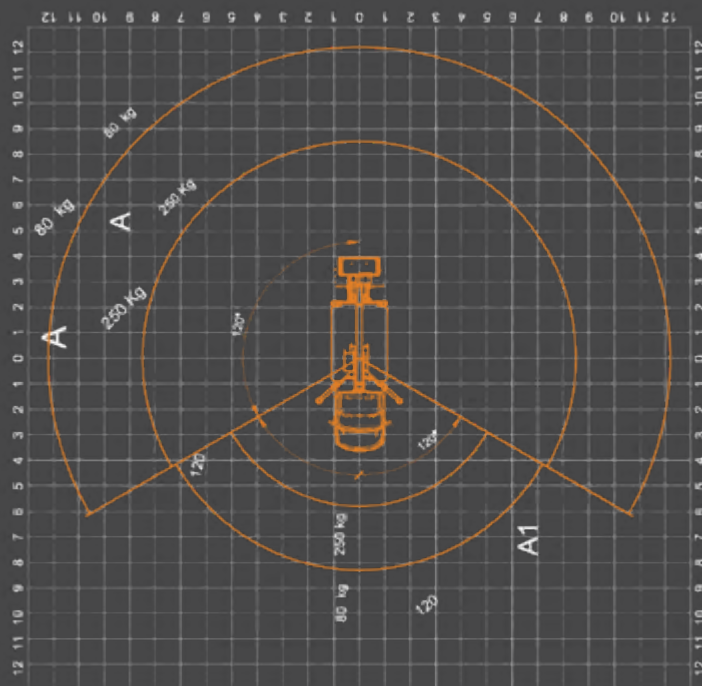
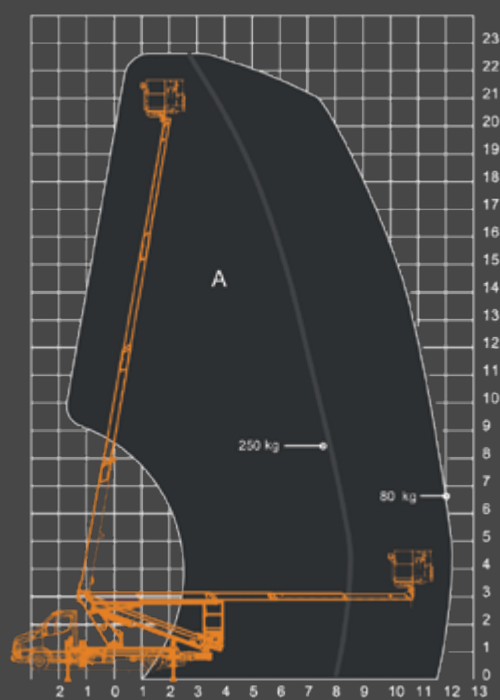


Available with water / air line supply to basket

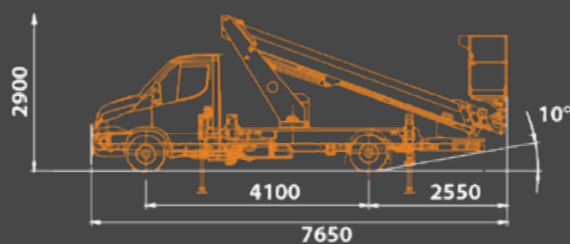
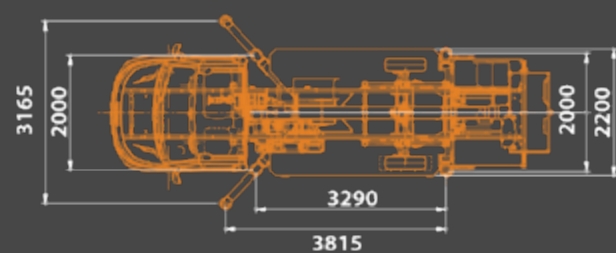


The Scorpion 2313 self-drive truck mount has an extensive 12.3m working outreach

Working envelope



Dimensions





Static Boom Training Course (1b)

Course content includes:

- Awareness of health and safety regulation, accident prevention and control
- Safe operation of static self-propelled booms and their limitations
- Pre-use checks, inspection and function tests
- Route planning before operation of static self-propelled booms
- Manoeuvring the machine
- Setting up a static vertical platform for work
- Basic operational skills
- Selection and use of fall arrest equipment

Successful candidates receive a PAL (Powered Access Licence) photo ID card for the 1b category, which is valid for 5 years.

Contact Hird Training today

Telephone: 01482 481965. Email: training@hird.co.uk





After Sales Service

Oil&Steel's mission is to deliver excellent customer service

That includes supporting our customers so they always get the best out of their spider boom lifts and truck mounted platforms.

Our after-sales service is second to none – with fast and friendly expert technical advice always available.



Spare Parts and Service

That is backed up with a rapid spares service, a highly efficient maintenance and regulatory inspection (thorough examination) and full warranty back-up.



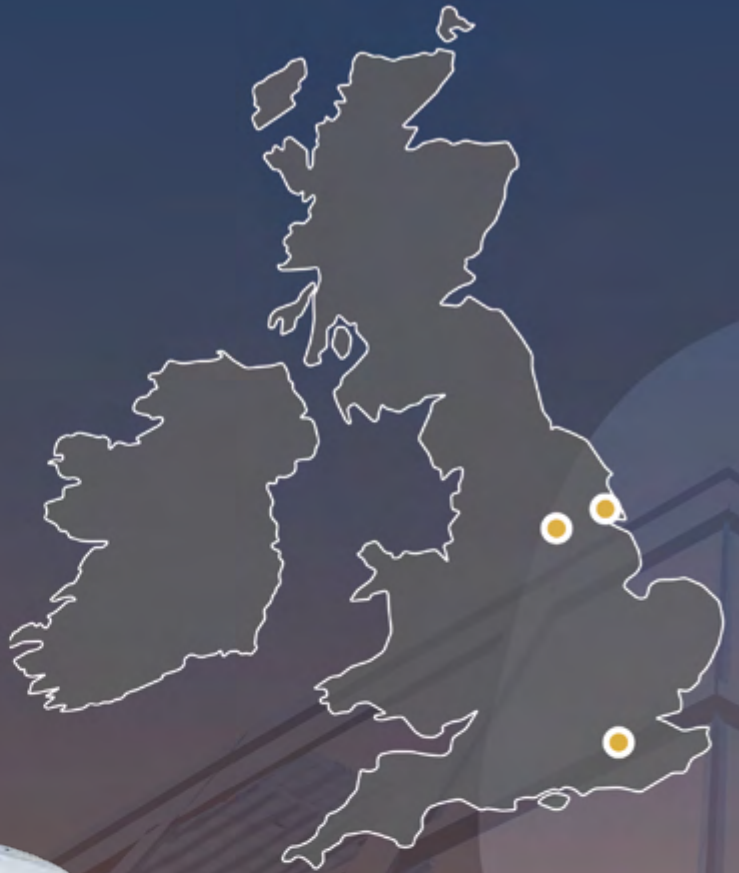
Service & Maintenance

Oil&Steel can provide high quality service and maintenance support for your spider platforms and truck mounted platforms in whatever configuration is best.

Our UK authorised distributor, Hird, operates a national team of mobile engineers who are fully-qualified and experienced in servicing all types of aerial platforms.

All engineers carry a stock of parts, and we can order other parts rapidly, so many maintenance tasks can be carried out with a first-time fix.

OIL & STEEL



Oil and Steel

info@oilandsteel.co.uk

Northern (Head Office)

English Street,
Hull HU3 2BS

Tel: +44 (0)1482 227333

Email: northern@hird.co.uk

Central

Shaw Lane Industrial Estate
Ogden Road, Doncaster
DN2 4SQ

Tel: +44 (0)1302 341659

Email: central@hird.co.uk

Southern

Unit 8, Redhill 23 Business Park
Holmethorpe Avenue,
Redhill RH1 2NB

Tel: +44 (0)203 174 0658

Email: southern@hird.co.uk

info@oilandsteel.co.uk