

The Oil&Steel Octopus 18 spider platform provides a maximum working height of 18m and maximum outreach of 8.3m (one operative operation).

The platform is just 790mm wide in tracking mode so is ideally suited to being operated in confined spaces. Like all Octopus spider platforms it is designed to be operated across low load-bearing ground and sensitive floors.

Power options

- Low emission petrol or diesel engine
- Bi-energy – petrol or diesel engine with a 110v mains electric motor
- 110v Electric Motor



18m max working height



IPAF - Static Boom (1b, 1b+)



Technical Specifications

Max Working Height:	18m
Platform Height:	16m
Max Working Outreach:	8.3m
Load Capacity:	200kg (2 person restricted)
Stowed Height:	1980mm
Stowed Length:	5500mm
Stowed Width:	1400mm (with basket)
Basket Dimensions:	L1400 x W700 x H1100mm
Removable Basket	Standard via quick release
Outrigger Footprint:	2600mm x 2900mm (variable)
Tracks:	Hydraulically Extendable
Power Source :	12hp Petrol
Wireless Remote Control:	Optional
Total Machine Weight:	2700kgs

Optional Accessories

- Wireless radio remote (outriggers & drive functions)
- Non marking tracks
- Water / air line supply to basket
- Automatic stabilisation
- 9hp diesel engine (+10kgs)
- 110v electric motor
- Jib rotation
- Variable outriggers

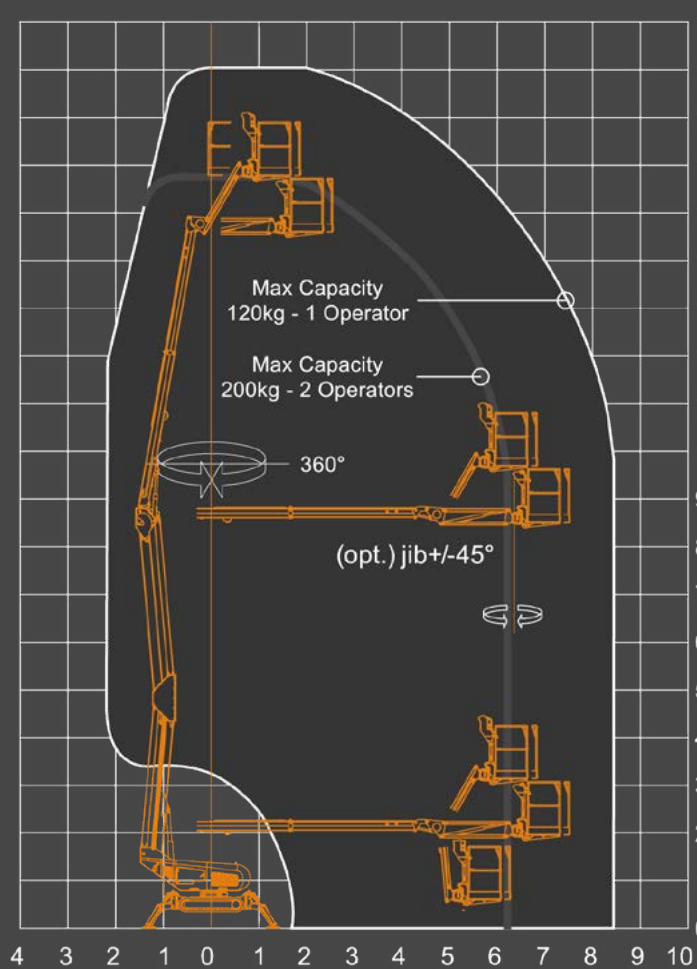


Available with water / air line supply to basket



Working height of up to 18m from a compact footprint

Working envelope



Dimensions

