

The Scorpion 1490 truck mounted platform on an IVECO chassis has a telescopic boom providing a maximum working height of 14.2m and a maximum outreach of 9.2m.

Based on a truck with a 3.5t chassis, it can be driven and operated with a standard car licence, making it a popular choice for rental companies. The truck-mount platform has intuitive, proportional controls, making it easy to use.



14.2m max working height



IPAF - Static Boom (1b, 1b+)



Technical Specifications

Max Working Height:	14.2m
Platform Height:	12.2m
Max Working Outreach:	9.2m
Load Capacity:	225kg
Stowed Height:	2900mm
Stowed Length:	7500mm
Stowed Width:	2100mm
Basket Dimensions:	L1400 x W700 x H1100mm
Outrigger Footprint:	(Hydraulic) 2605mm x 3880mm
Engine:	2287cc Euro 6 D-temp
Total Machine Weight:	3270kg

Optional Accessories

- Working lights chassis or basket
- Amber flashing led kit
- Chapter 8 high visibility markings
- Under-run side protection
- Personalised vehicle livery wrap
- Reversing camera
- Water / air line supply to basket
- Insulated fibre glass basket
- Cab air-con

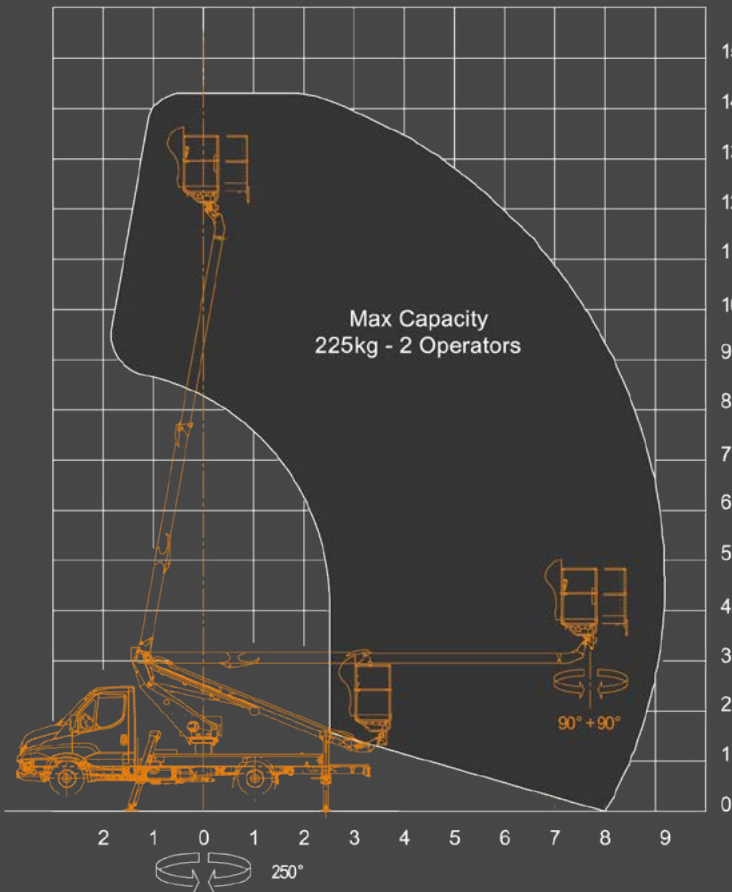


Available with cab air-con



Scorpion 1490 has a telescopic boom that's operated by simple, intuitive proportional controls

Working envelope



Dimensions

